

COMPANY PROFILE



M O T H A P O
GROUP

- 2 - About Mothapo
- 3 - The Mothapo Vision
- 4 - Quality Policy Statement
- 5 - Services & Expertise
- 8 - Capital & Equipment
- 9 - Broad Based Black Economic Empowerment
- 10 - Management & Resources
- 11 - Group Structure
- 12 - Current Projects
- 15 - Past Projects
- 18 - Profile: EL Mabitsela
- 19 - Profile: DF Samosamo
- 20 - Profile: L Mabitsela
- 21 - Company Details



Mothapo Consulting Engineers (Pty) Ltd is a professional Consulting Engineering and Project Management company that offers a range of technology based intellectual services as well as electrical and mechanical consulting services form part of the company offering.

Mothapo Projects was formed in 2007 by the former CEO of Dihlase Consulting Engineers. Mr Lehlogonolo E wa ga Mabitsela (Pr Tech Eng, Pr CPM) BTech (Elec) MSAIEE, MIPET. He formed this company fueled by the vision of establishing a consulting practice that would be able to address developmental challenges in the construction industry that South Africa is facing whilst reflecting the demographics of the country. The main aim of this company is to provide the highest level of service to their clients.

Mothapo Consulting Engineers is 100% black owned and subscribes to the principles of Broad Based Black Economic Empowerment.

Our main focus is Southern Africa, with centralised offices in Fourways (Gauteng) and satellite offices in Mthatha (Eastern Cape), Bloemfontein (Free State), Lesotho and Witbank (Mpumalanga).

The firm is a member of CESA and carries Professional Indemnity Insurance of R15 000 000,00.

The company can also raise guarantees for projects up to R1,5 billion.



VISION

To become a highly competitive, honest, vibrant, truly South African business, providing high quality Construction Management, Engineering, Facilities, Technology and Project related management services in South Africa and beyond.

MISSION

To provide excellent and professional services to the communities in the fields of Consulting, Project, Construction and Facilities Management, in order to improve the quality of life of the community we serve. In doing so, this ensures the long-term job satisfaction and financial stability of all members of our firm.



Mothapo Consulting Engineers (Pty) LTD is a professional Consulting Engineering and Project Management company that offers a range of technology-based construction and intellectual services, Electrical and Mechanical Consulting services form part of the company offering.

The management of Mothapo Consulting Engineers (Pty) Ltd. have defined and documented the following commitment with respect to quality:

- To use the requirements and principals of ISO 9001:2015 to implement and maintain the processes needed to produce a level of professional service and a consistent standard of quality.
- To foster good relationships with clients by effective communication and feedback.
- To continually improve the effectiveness of the Quality Management System.
- Develop, implement and maintain a formal management system and structures to provide framework for setting quality objectives.
- To deliver all services in accordance with the specifications and requirements of our clients.

- Ensure that adequate resources required for the establishment, implementation and maintenance of the quality management system are available.
- We commit ourselves to meet applicable requirements as well as all statutory and regulatory requirements.

The quality policy shall:

- Be available and be maintained as documented information;
- Be communicated, understood and applied within the organization
- Be available to relevant interested parties, as appropriate.

By adopting this philosophy, the clients of Mothapo Consulting Engineers (Pty) Ltd will be assured of an excellent standard of completed projects and services in accordance with specifications and contracts.

Electrical & Mechanical Consulting

Master planning, feasibility studies, project planning, life cycle costing, preliminary and detail design, procurement, tender reviews, inspection and quality control, community-based contracting, site supervision, training, testing and commissioning.

Electrical Infrastructure Development

Large electrification, reticulation and distribution projects, as well as load flow studies for utilities such as Eskom, LEC and a multitude of local authorities in Southern Africa.

Electrical supply and reticulation to industrial users; electrical and electronic services for water treatment, sewage purification and water pumping schemes for various authorities.

Project Management

Project scheduling and programming, preparation of contract documents, cost and budgetary control, contract management and close out on various types of projects.

Facilities Management

Mothapo has the knowledge and capacity to undertake facilities management for buildings and plants of different sizes. We have MAXIMO as our standard CMMS (Computerised Maintenance Management) programme of choice but are flexible to the client's choice of CMMS. We have experience of working as part of a FM and Asset Management Team in executing Public Private Partnerships, or as a stand-alone FM service provider.

Mothapo has registered Construction Project Managers (Pr CPM). We have the experience, knowledge and capacity to undertake Project/Construction Management projects varying in size and complexity. In more than one instance, we have been appointed either as Principal Agent or Lead Consultant.

Civil Construction & General Building Works

The Senior Staff of Mothapo have been part of design teams of many successful buildings including: Hospitals, Office buildings, Government buildings, Shopping centres, Educational and Industrial facilities.

Building Services

Mothapo has extensive experience in engineering all aspects of:
Electrical, Mechanical, Civil & Structural Engineering in both public and private sector buildings and infrastructure.

Engineering

Engineering experience and skills in the design and construction of electrical and electronic building services include:

- Preparation of designs and specifications, execution of quality control and administration of contracts.
- Evaluation of offers on sub-contractors on behalf of clients or main contractors.
- Management of all construction work and co-ordination of services.
- Preparation of record drawings of completed installations and services.
- Management of maintenance programmes for buildings.
- Dealing with all aspects of the Occupational Health and Safety Act (Act No: 85 of 1993, as amended) as well as all relevant sections of the application of the National Building Regulations (SABS 0400)

Specific Installations

- Electrical reticulation and lighting systems
- Alarm and CCTV systems
- Security installations
- Lightning protection
- Building and energy control systems
- Emergency power installations
- Telephone and communication systems and PA systems
- Energy management

Quantity Surveying in Mining

- Open cut establishment and operation
- Shaft collar construction
- Shaft sinking and lining (including sub vertical shafts)
- Decline/drift development
- Ore and waste pass development
- Raise-boring of rock passes and ventilation holes
- Underground construction and equipping
- Underground water handling facilities
- Drop raising
- Underground support
- Stopping
- Exploration drilling



Equipment

We run a comprehensive materials and machinery yard that has the following:

- 1 x 8-ton crane truck
- 4 x tipper trucks
- 3 x TLB
- 4 x LDV bakkies

In addition to the above we also have a large amount of scaffolding and containers. Most of the heavy and specialised machinery is rented, on an as and when needed basis.

Facilities

Mothapo runs a vast network of computers, printers, plotters and other equipment to make the daily activities run smoothly. More details are available on request.

Software

Mothapo uses the following software to enhance design and administrative tasks:

- MS Office Suite
- MS Projects
- Timeline
- Power Draft
- BSIMAC: Air Conditioning Loads
- ARAMIS: Facility Management
- MAXIMO: Facility Management
- Retic Master

Other Equipment

Other equipment used by the firm includes the following:

- Data logger
- Various air flow meters and thermometers
- Various electrical Volt-, Amp- and Ohm- meters
- Earth tester

Members of the firm have been actively involved, as part of industry associations, in the development of the Construction Charter. The company is a strong advocate of the Broad-Based Strategies of Black Economic Empowerment. Skills development strategies employed by the firm include both structured mentoring and continuous professional development guided by the Built Environment Councils of South Africa. A significant fraction of the company's salary bill is dedicated to the skills development of all employees with specific focus on developing the skills of previously disadvantaged employees.

Mothapo Projects is committed to:

- Ensure and maintain a non-discriminatory working environment.
- Implement measures that improve the capabilities of any employee who may have been previously disadvantaged.
- Provide a preferential recruitment and selection procedure.

To implement the above, Mothapo is committed:

- To ensure that there is equal opportunity for all employees to have access to facilities and opportunities that Mothapo may offer without reference to race, gender or creed.
- To foster an attitude of tolerance and acceptance of persons across racial and cultural differences which will provide for a harmonious and constructive working environment.
- To provide opportunities for persons from the target group to develop into key personnel based on their potential and ability to perform.

Mothapo will continue to achieve the above without lowering the standard and quality of work for which Mothapo is known.

DTI Scorecard

Through training and the above strategies encompassing the seven pillars of empowerment, the company is categorised as a Level One Contributor to empowerment on the DTI's BBBEE balanced scorecard. All dealings or procurement of services from Mothapo Consulting Engineers (Pty) Ltd will attract 135% score for our clients and business associates on their scorecards. A certificate of our scorecard is available and is attached to this profile.

Resources

Mothapo has a central office in Fourways, Gauteng which services the national footprint in Southern Africa.

We also have satellite offices in Mthatha (Eastern Cape), Bloemfontein (Free State), Lesotho, Witbank (Mpumalanga) and Durban (Kwa-Zulu Natal) to ensure support regionally in areas we operate.

Our Team

Over and above our comprehensive network of specialist sub-contractors, our resourceful and dynamic hands on team consists of the following:

- Founder & Directors x 2
- Management x 4
- Project Managers x 9
- Admin & Finance x 8
- Engineers x 8
- Technicians x 12

Company Structure

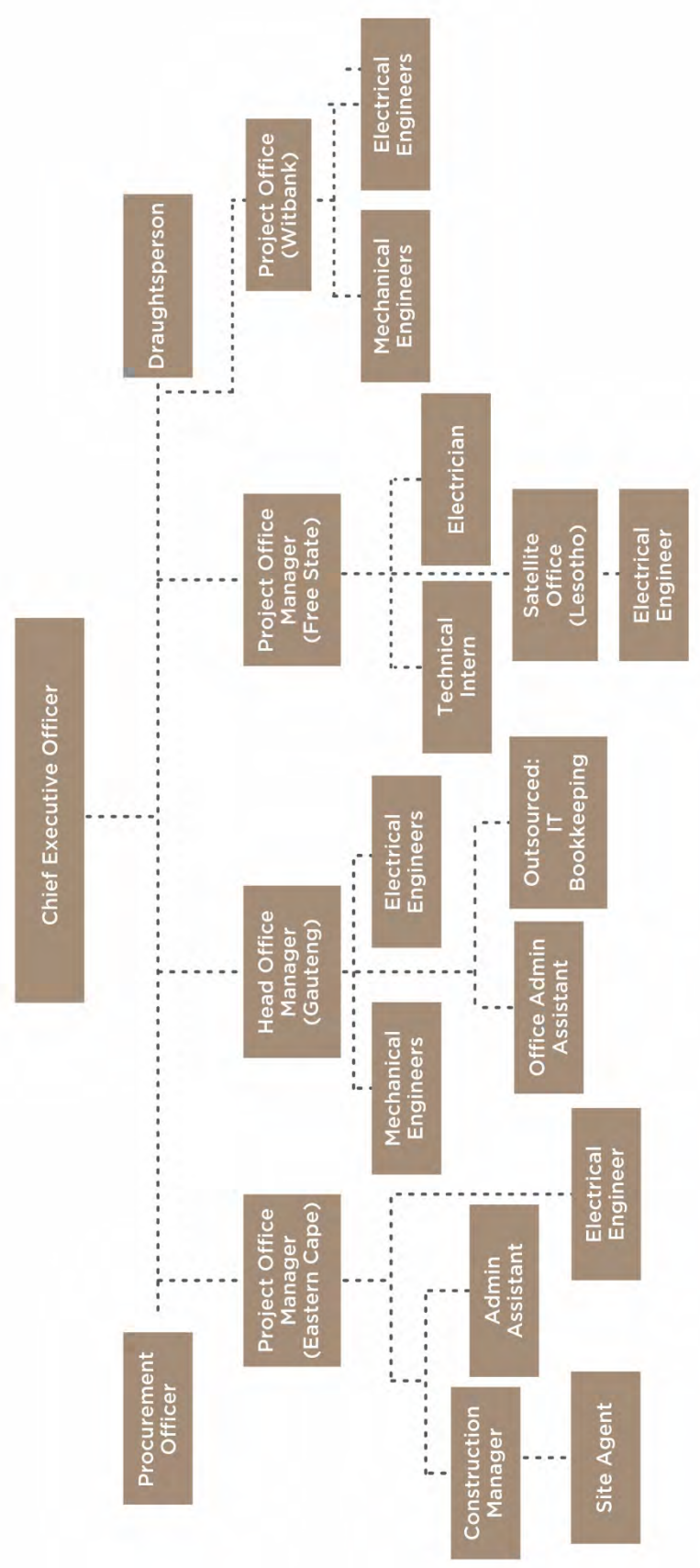
The company employs a flat management structure where principals, together with the CEO, run the day to day operations of the company.

The board of directors is comprised of:

- Mr. Lehlogonolo E wa ga Mabitsela - CEO (Pr Tech Eng, Pr CPM) BTech (Elec) MSAIEE, MIPET
- Mr. David Samosamo - Bloemfontein & Lesotho Office Manager (Pr. Eng-Electrical)



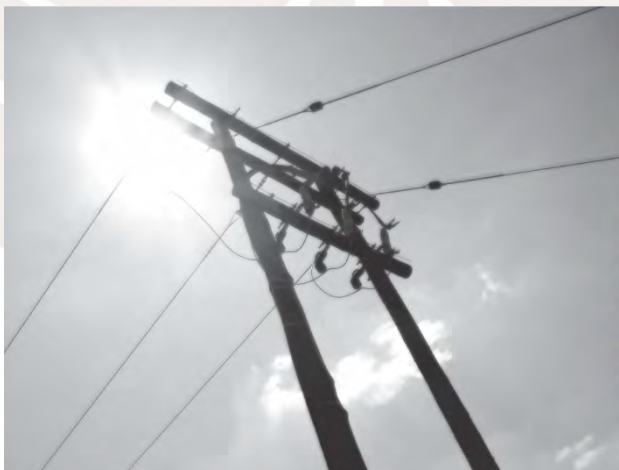
GROUP STRUCTURE



| CURRENT PROJECTS | | | | | | | |
|------------------|--|-----------------------------------|------------|-------------------------|---|--------------------|-------------------|
| START YEAR | PROJECT | TYPE | VALUE | CONTRACT PERIOD | CLIENT | AGENT | CONTACT NUMBER |
| 2017 | Clewer Community Hall - Design and Building | Construction | R5m | 1 year | Anglo American-Landau Colliery | John Quinn | (+27) 836761264 |
| 2017 | Mini Transfer Stations - Potion 15 & 92 Nooitgedacht and Empumelelwen Substation | Waste Management | R4m | 1 year | Anglo American-Landau Colliery | John Quinn | (+27) 836761264 |
| 2017 | Schoongezicht Pump Station | Civil Works | R5m | 1 year | Anglo American-Landau Colliery | John Quinn | (+27) 836761264 |
| 2017 | Industrial Park Development 2019 | Construction | R5m | 1 year | Anglo American-Goedeheop Colliery | John Quinn | (+27) 836761264 |
| 2017 | Mpophethe Primary School | Building Services - Refurbishment | R4.5m | 1 year | Anglo American-Goedeheop Colliery | John Quinn | (+27) 836761264 |
| 2017 | Junior Traffic Training Centre | Building Services - Refurbishment | R1.5m | 1 year | Anglo American-Isibonelo Colliery | John Quinn | (+27) 836761264 |
| 2017 | Lebohlang Sewer Network | Civil Works | R5m | 1 year | Anglo American-Isibonelo Colliery | John Quinn | (+27) 836761264 |
| 2017 | Phola Fire Station | Building Services - Upgrade | R5m | 1 year | Anglo American-Zibulo Colliery | John Quinn | (+27) 836761264 |
| 2017 | The Design (if any) supply, delivery, construction, installation, testing, commissioning and remedying of any defects for electrical works of the stockyard dam relocation project at New Vaal Colliery Substation | Construction and Installation | R9m | 1 year | New Vaal Colliery-Anglo American (Venn-Milford) | Vias Stephanou | (+27) 11 877 7000 |
| 2014 | Egobco Local Municipality Rural Electrification | Project Management | R8 102 999 | 3 years 2016 | Egobco Local Municipality | Cebo Obose | (+27) 47 548 5609 |
| 2012 | Matatiele Universal Access Electrification | Design & Project Management | R500m | 3 years 2016 | Matatiele Local Municipality | J Augustine | (+27) 72 157 5869 |
| 2014 | DPW Prisons – Krugersdorp, Diepkloof, Boksburg, Vereeniging, Heidelberg, and Benoni Electrical and Mechanical Engineering Services | Design & Project Management | R380m | 3 years (On-going) 2017 | Department of Public Works | Steven Matalukanye | (+27) 11 713 6244 |

| | | | | | | | |
|------|--|---|----------|-------------------------|-------------------------------|----------------------|-------------------|
| 2014 | City of Tshwane – Multipurpose Centre – Hammanskraal Electrical and Mechanical Engineering Services | Consulting | R50m | 3 years (On-going) 2017 | City of Tshwane | Justice Rathupetsane | (+27) 12 358 4864 |
| 2014 | City of Tshwane – Refilwe Stadium Electrical and Mechanical Engineering Services | Consulting | R45m | 3 years (On-going) 2016 | City of Tshwane | Pheladi Puana | (+27) 12 358 8681 |
| 2015 | Department of Public works - Wonderboom Military Base Sick Bay | Refurbishment- Electrical Works | R1.5m | 1 year (On-hold) | Department of Public Works | Suzan Masha | (+27) 12 310 5125 |
| 2016 | Appointment of a professional service provider, clinics and community health centres – Free State Province | Electrical Services | R4m | 3 years | National Department of Health | Singh Shash | (+27) 12 482 0420 |
| 2014 | Nala Local Municipality High Mast Lighting Electrification | Consulting | R4m | 1 year 2015 | Nala Local Municipality | Mota Moleko | (+27) 56 514 9200 |
| 2014 | Nala Local Municipality – Electrification for Monyakeng | Consulting | R12m | 3 years 2016 | Nala Local Municipality | Mota Moleko | (+27) 56 514 9200 |
| 2015 | uMshathi Municipality - Planning, Design & Turnkey - Implementation of Inadi Electricity Project | Consulting | R16m | 3 years 2018 | uMshathi Municipality | Phumulani Gwala | (+27) 76 027 8688 |
| 2014 | Monyakeng Sports Complex – Electrical Engineering | Consulting | R4m | 2 years 2016 | Nala Local Municipality | Mota Moleko | (+27) 56 514 9200 |
| 2014 | Nkonkobe Local Municipality Rural Electrification | Project Management | R | 3 years 2016 | Nkonkobe Local Municipality | KC Maneli | (+27) 46 645 7451 |
| 2015 | Mhlontlo Local Municipality Rural Electrification | Project Management Turnkey | R8m | 3 years 2017 | Mhlontlo Local Municipality | S.G Sotshongaye | (+27) 47 553 0512 |
| 2015 | Lekwa Local Municipality | Turnkey | R702 240 | 3 years 2018 | Lekwa Local Municipality | Linda Tshabalala | (+27) 17 793 3002 |
| 2015 | Amacwerha Phase 2 Turnkey Electrification | Turnkey Electrification | R8m | 3 years 2017 | Mhlontlo Local Municipality | S.G Sotshongaye | (+27) 47 553 0512 |
| 2015 | Reuben Monareng Primary School | Design of Electrical and Mechanical Building Services | R1.5m | 2 years 2017 | ASEDA Consulting Engineers | Thabo Msimanga | (+27) 78 317 2075 |
| 2015 | Sekgopi Primary School | Design of Electrical and Mechanical Building Services | R1.5m | 2 years 2017 | ASEDA Consulting Engineers | Thabo Msimanga | (+27) 78 317 2075 |

| | | | | | | | |
|------|--|---|----------|---------------|---------------------------------|----------------------|------------------------------|
| 2015 | Batho-Batho Primary School | Design of Electrical and Mechanical Building Services | R1.5m | 2 years 2017 | MK and Associates | Moeketsi Mokgoe | (+27) 82 444 0966 |
| 2015 | Mooi Mpofana Local Municipality | Provision of Turnkey Electrification 2015/18 | R8m | 3 years 2018 | Mooi Mpofana Local Municipality | M Moyo | (+27) 33 263 7700 |
| 2015 | Department of Public Works- Refurbishment joint support base finance office | Refurbishment – Electrical Works | R284 829 | 1 year 2016 | Department of Public Works | Susan Masha | (+27) 12 310 5125 |
| 2016 | Turnkey Electrification of Embalenhle Ext 10 & 22, Kinross Ext 21 and Emzinoni Ext 8 | Design, construction and project management | R7m | 3 years 2019 | Govan Mbeki Local Municipality | Sbusiso Rasmeni | (+27) 17 620 6166/0 |
| 2016 | Turnkey Electrification Cintsa east area 17 and Bulk reticulation of zone 10 | Design, construction and project management | R4m | 3 years 2018 | Great Kei Municipality | Mrs. L Mosala | (+27) 43 8311 028/325 |
| 2016 | Upgrading of Balfour MV/KV System and Existing Sun-station | Upgrading of a substation | R5m | 6 months 2016 | Dipaleseng Local Municipality | Mr. S Netshichale | (+27) 17 773 0055 |
| 2017 | Madibeng heights | Electrification | R37m | 1 year 2018 | Madibeng Local Municipality | Willie Booyens | On hold (+27) 12 318 9341 |
| 2015 | Planning Design and Turnkey -Upgrade in Warden Phase 1 & 2 | Design, construction and project management | R15.8m | 3 years 2017 | Phumelele Local Municipality | BW Kannemeyer | (+27) 58 913 8329 |
| 2015 | Planning Design and Turnkey -Implementation of Inadi Electricity Project | Design, construction and project management | R13m | 3 years 2018 | Umshwathi Local Municipality | NM Mabaso | (+27) 33 815 2249 |
| 2017 | Amacwerha Phase 2 | Additional work electrification of rural community | R10m | 2 years 2017 | Mhlontlo Local Municipality | Ms N Budaza Mditshwa | (+27) 47 553 0189 |



| PAST PROJECTS | | | | | | | |
|---------------|---|---|----------|-----------------|---|---------------------|------------------------------------|
| START YEAR | PROJECT | TYPE | VALUE | CONTRACT PERIOD | CLIENT | AGENT | CONTACT NUMBER |
| 2016 | Motetema, Ditakaneng Rangers and Phomolo | Electrification – Task Order | R7m | 5 months 2017 | Eskom - Limpopo Operating Unit | Nkheso Manganyi | (+27) 15 299 5007 |
| 2016 | Turnkey Electrification of Damonsville- extension 3 Tlapalawa | Design, construction and project management | R7m | 6 months 2017 | Madibeng Local Municipality | Willie Booyens | (+27) 12 318 9341 |
| 2016 | Ga Madiba Electrification | Electrification | R5m | 1 year 2017 | Eskom - Limpopo Operating Unit | Mashudu Ratshitanga | (+27) 15 230 1519/ 083 758 5922 |
| 2016 | Dr. Pixley Isaka Ka Seme Local Municipality | Design and Construction Vukuzakhe Switching Station | R10m | 6 months 2016 | Dr. Pixley Isaka Ka Seme Local Municipality | Johanna Ncobo | (+27) 17 734 6100 |
| 2015 | Bangalong Village | Electrification - Bangalong Village | R1.5m | 1 year 2016 | Eskom - Limpopo Operating Unit | Kgabo Kganyakgo | (+27) 78 317 2075 |
| 2015 | Eskom Electrification-Khakhu Mamphagi | Electrification | R1m | 1 year 2016 | Eskom Limpopo Operating Unit | Kgabo Kganyakgo | (+27) 78 317 2075 |
| 2014 | Eskom Electrification – Marakwaneng, Matsimela Villages | Consulting | R13m | 2 years 2015 | Eskom | Kgabo Kganyago | (+27) 15 299 0687 |
| 2014 | Mathibeng Village | Electrification | R1m | 2 years 2015 | Eskom | Kgabo Kganyago | (+27) 15 299 0687 |
| 2014 | Mokgwathi Ext 10 & 11 | Electrification | R1m | 2 years 2016 | Eskom | Kgabo Kganyago | (+27) 15 299 0687 |
| 2011 | Wesselsbron Substation | Design | R2m | 3 years 2014 | Nala Municipality | Mota Moleko | (+27) 56 514 9200 |
| 2011 | Bothaville Substation | Design | R8m | 3 years 2014 | Nala Municipality | Mota Moleko | (+27) 56 514 9200 |
| 2010 | Maintenance of Various Building Lifts | Consultants and Project Management | R25m | 5 years 2015 | Department of Public Works | Makgati Phaladi | (+27) 11 713 6244 |
| 2015 | Joint Support Base Finance Office | Refurbishment -Electrical Works | R284 829 | 1 years | Department of Public Works-Pretoria | Susan Masha | (+27) 12 31051 25 |
| 2010 | Maintenance of Various Building Lifts | Consultants and Project Management | R25m | 5 years | Department of Public Works-Johannesburg | Makgati Phaladi | (+27) 11 713 6244 |

| PROJECT | VALUE |
|--|--------------|
| Heidelberg Prison: Design of the Security Installation and Guard House - Project Management on the project. | R 8 000 000 |
| Hendrina Secure Care Centre Phase 1: Project Management for Mechanical and Electrical services to refurbish old prison into a secure care centre. The Electrical part of the contract included security systems, design and installation, PABX system, Under floor heating and Lightning protection. | R 3 000 000 |
| Kokstad Prison: Developing a Quality Measurement System for security systems. | R 2 000 000 |
| North West Schools Refurbishment: Refurbishment of 21 schools in the North West Province - Site supervision and Drafting of "as built" drawings. | R 8 890 000 |
| Wepener Prison Refurbishment: Refurbishment of Wepener prison for the Department of Public Works. | R 380 000 |
| Kopanong CBD Precinct Concept Design for a Government Precinct. This is part of the GPG Blue IQ Projects. | R67 000 000 |
| Hendrina Secure Care Centre Unit G Phase 3: Design of Electrical and Mechanical systems for multi-purpose Recreational area and Sports facility to the value of R1 200 000, 00 - Project management for Electrical Infrastructure installation. | R 150 000 |
| Further Electrification of Kgotsong: Design and construction supervision for 500 connections in Kgotsong, Bothaville. | R 1 100 000 |
| Lesotho Electricity Corporation Project 3b: Design for electrification of 4800 stands - MV & L V. | R 9 000 000 |
| Eskom Turnkey Electrification of 4350 Stands around Dendron: Design of MV & L V Reticulation Systems for 6 Villages - Contract Supervision and Project Management for the consortium. | R 4 500 000 |
| Suikerbosrand Nature Reserve: Developing a master plan for the Electrical Main Supply to the reserve - Feasibility Studies and final Design. | R 1 200 000 |
| Moleko's Farm Reticulation: MV and L V Reticulation design for farming village with 24 connections - SWER Technology was used for 33 kV MV distribution without isolation transformer. | R 180 000 |
| Reticulation of Mfedike Village in the RDC Project: Design of the L V Distribution System and the MV Supply to the village - Budgeting for the electrical reticulation system. Site supervision of electrical contractors on site. | R 6 000 000 |
| Eskom Turnkey Electrification of Glenroy, Makoea, Mamadila, Mars, Kwaaidral: Design of the Electrical LV and MV reticulation network for 1205 stands the villages surrounding Pietersburg and Louis Trichardt. | R 4 250 000 |
| Eskom Turnkey Electrification of Claremont, Goodhope, Malokong, Ga-Masipa, Prospect, Taolome, Preezeburg, Matanau, Matjijileng, Setupulane and Sodooma: Design of the Electrical LV and MV reticulation network for 1750 stands the villages surrounding Pietersburg. | R 3 600 000 |
| Pecanwood Estates: Design & Drafting of MV and L V Distribution System for a Townhouse complex and Golf Clubhouse. | R 3 250 000 |
| Gateshewe: Electrification of 1200 erven for Kimberley Municipality for underground MV and LV reticulation networks, including Street lighting | R 2 000 000 |
| Meloding: Electrification of 7000 erven for Eskom using concrete poles and an overhead reticulation system. | R 9 000 000 |
| Pomfret Military: Electrification, distribution and ancillary electrical work for a new base Military Base | R 2 400 000 |
| Botsekabela: Master planning of 9000 erven for Bloemfontein Municipality | R 9 000 000 |
| Kimberley: PWD: Vartaus Air-Conditioning and Ventilation Installation | R 1 900 000 |
| Kimberley: Police Headquarters: Mortuary and Ventilation Installation | R 450 000 |
| Kroonstad Hospital Air-conditioning, Ventilation, Hot and Cold Water services and Medical Gas | R 1 000 000 |
| Gauteng Housing Department: Slovoville Housing RDP Housing - 600 Houses | R160 000 000 |
| SFT: Doornfontein 1st Floor Upgrade | R23 000 000 |
| Tiger Bus Enterprise: Ermelo Remote Hub - Data Centre Construction | R160 000 000 |
| Umbutho: Worcester Remote Hub - Data Centre Construction | R160 000 000 |

| | |
|---|--------------|
| PWD National: Giyani Home Affairs - Repairs and Maintenance | R16 000 000 |
| MTN SA: Port Elizabeth MTN MVRC - MTN High Volume Repair Centre | R6 600 000 |
| MTN SA: East London MTN Corporate Offices - Commercial Offices | R3 900 000 |
| MTN Facilities: Durban MTN HVRC - MTN High Volume Repair Centre | R6 000 000 |
| MTN Facilities: Bloemfontein MTN HVRC - MTN High Volume Repair Centre | R7 800 000 |
| BHP PMO: BHP Billiton Admin Block - Construction | R7 000 000 |
| BHP Billiton: Compound Substation - Construction | R1 200 000 |
| BHP Billiton: BHP West Admin - Construction | R10 400 000 |
| Nala Local Municipality: Independent Business Review - Consulting | R191 500 000 |
| Nala Local Municipality: Turnkey Construction & Construction Management. Lead Consultants for Planning, Design, Implementation & Management of the Project Unit | R33 000 000 |
| Nala Local Municipality: Nala Electrification Program - Project Management | R20 000 000 |
| City of Tshwane Credit Control Project: Control & Logistics Management | R14 400 000 |
| City of Tshwane: Sunnyside Bowling Club - Consulting | R3 500 000 |
| Engcobo Local Municipality: Review of 2011/12 Electrification Programme - Consulting | R200 000 000 |
| MTN Swaziland: MTN Ezwulwini Connect Store - Project Management | R2 400 000 |
| Matatiele Local Municipality: Matatiele Harry Gwala Electrification - Design & Project Management | R5 800 000 |
| Nala Consulting: Proposed Sports Facility at Fauresmith - Design & Project Management | R6 000 000 |
| ITTS Quantity Surveyors: Hostels for Assemblies of God Church in Thaba-Nchu - Design & Project Management | R1 200 000 |



CEO



**Lehlogonolo Elias
Mabitsela**

Pr Tech Eng, Pr CPM

Chief Executive Officer -
Mothapo Consulting
Engineers Pty Ltd
Managing Director - Ideal
Trading Pty Ltd
Chairperson -
Mothapo Group Inc

**Membership of Professional
Societies:**

Professional Engineering
Technologist, registered with
the Engineering Council of
South Africa (E.C.S.A)

Member of the Consulting
Engineers South Africa (CESA)

Fellow of the South African
Institute of Electrical Engineers
(S.A.I.E.E)

Member of the South African
Society for Professional
Engineers (S.P.E)

Professional Construction
Project Manager (Electrical),
registered with the South
African Council for the Project
and Construction
Management Professions
(SACPCMP)

In practice as a Consulting Electrical Engineer since 1998 he gained vast experience in project management, electrical distribution network planning and design, financial control and business management.

To stay abreast with the latest developments and technology he attended many seminars and workshops in the field of Electrical and Electronic Engineering as well as Project Management.

During a career in the consulting environment, many projects were successfully managed, recently the larger ones were:

1. Design and Program Management of the 2006 - 2007 North Western Region (Eskom) electrification of 19 villages around Mmabatho. These projects meant 32 600 households gained access to electricity in this region during this financial year. Project value was R228 000 000
2. Construction Project Management during 2009 - 2011 of MTN new data centers on behalf of emerging contractors. Four of these data centers were managed to the project value of R600 000 000
3. Design and Project Managements of DPW Prisons in Krugersdorp, Diepkloof, Boksburg, Vereeniging, Heidelberg and Benoni. Services included electrical and mechanical engineering. Project value was R380 000 000

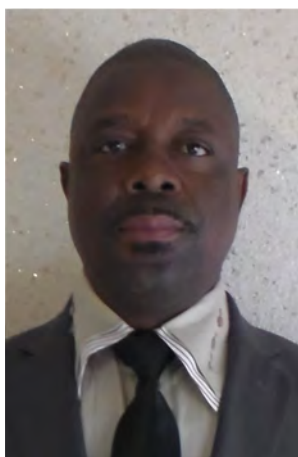
As a person, he is a highly motivated workaholic, independent self-starter with good communication skills and a fair understanding of cross – discipline subjects. He is an accomplished and experienced electrical engineer who offers practical and cost-effective solutions to often complex problems.

As a projects manager, he is a good team leader, project coordinator, planner, problem solver, advisor and financial controller.

As an entrepreneur, he has started and successfully managed 2 consulting practices (Dihlase Consulting Engineers and Mothapo Consulting Engineers), 2 retail outlets (Cappellos restaurants) and these are still successful businesses today.

He is an all rounded businessman and family man with a flair for success.

Associate Director



**David Fono
Samosamo**

Pr Eng

**Associate Director -
Mothapo Consulting
Engineers Pty Ltd**

Membership of Professional Societies:

The Engineering Council
of South Africa (ECSA)

The South African
Institute of Electrical
Engineers (SAIEE)

The Project Management
Institute (PMI)

Born in 1968, Mr. David Fono Samosamo is a registered professional Engineer with a Bachelor's Degree in Electrical Engineering from the University of Cape Town and has a professional career experience of over 22 years. Of his years of practice, Mr. Samosamo spent the first eight years in electrical utility environment gaining expertise ranging from network operations, maintenance to planning. He then joined electrical consulting environment from 2003 and has been practicing in this field till currently. He gained a wide experience in planning and design on electrical building services, electrification, reticulation, distribution substations and general electrical engineering services. Besides engineering functions, Mr. Samosamo is also highly knowledgeable in project management, contract administration and other business functions such as business marketing and general office administration.

As a person, Mr. Samosamo is a self-motivated, hardworking and ambitious individual with good communication skills and as a leader he always identifies and involves key beneficiaries in key decision-making processes.

To keep abreast with the latest in technology and to meet the requirements of the Engineering Council of South Africa for Professional Engineers, Mr. Samosamo is a member of the South African Institute of Electrical Engineers (SAIEE) and attends various Engineering forums, workshops and training courses relevant to the profession. It has over the years also become a hobby for Mr. Samosamo to provide mentorship to students and young Engineers and Technicians towards fulfilling their academic requirements and professional requirements.

During a career as electrical Engineer, Mr. Samosamo completed many major projects, a few of which are:

- 2001 - 2003: Rehabilitation, upgrading and strengthening of electrical infrastructure in Lesotho. R57 million.
- 2004 - 2009: Refurbishment of various substations in various towns. R20 million
- 2008 - 2009: Platooning schools in the Free State: >R100 million
- 2009 – 2012: New Mantsopa Hospital in Ladybrand. >R200 million
- 2015 – Present: Electrical works associated with project housing for Phase 2 project of the Lesotho Highlands Development Authority.

Office Manager



Lerato Mabitsela

BCom Adv. Dip MA

Office Manager -
Mothapo Consulting
Engineers Pty Ltd

**Membership of Professional
Societies:**

Association of Black
Securities and Investment
Professionals (ABSIP)

The Association for the
Advancement of Black
Accountants in South
Africa

Ms Lerato Mabitsela is a 33-year-old financial professional with 10 years' experience working in Finance. She obtained her BCom degree at the University of Pretoria and is currently affiliated with the Chartered Institute of Management Accountants, holding the Advanced Diploma in Management Accounting. In her years of experience, Ms Mabitsela spent the first three years of her career in the corporate environment gaining a diversified experience in the field of Accounting and Human Resources. She then joined Mothapo Consulting Engineers and has been with the organisation for 7 years in the Finance and HR department. Apart from Finance and Human Resources, Ms Mabitsela is passionate about Strategy in the organisation and has been a driving force behind designing and implementing a Quality Management system that will see Mothapo Consulting Engineers being internationally recognised for the standard of service and product offering.

Ms Mabitsela is a hardworking, diligent and ambitious individual with excellent interpersonal and communication skills. These qualities are what make her an outstanding leader within the organisation and a great mentor for those who report to her. She is also a mentor to young women in her community who aspire to the world of Business Accounting and Strategic Management.

With her exceptional track record of efficiency maximisation and performance improvement within the organisation through strategic management and quality optimisation, she worked her way up to the position of Office Manager for the Head Office of the organisation, overseeing the Operations, Finances and managing the Human Capital of the organisation under the leadership of the CEO, Mr Elias Mabitsela.

During her spare time, Ms. Mabitsela subscribes to the Association of Black Securities and Investment Professionals (ABSIP) and The Association for the Advancement of Black Accountants in South Africa and attends regular workshops and training to gain further insight into industry developments and trends. She also loves travelling and experiencing the different cultures the world has to offer.

List of Directors

E.L. Mabitsela
D.F. Samosamo

Registration Numbers

Company - 2007/009450/07
VAT – 4760251407
CRS – CIDB224984

Head Office

Unit 23, Block C, Cedar Tree Office Park,
cnr Cedar & Stinkwood Close, Fourways, 2055

P O Box 50781, Midrand, 1685

Tel: +27 11 238 7008/ +27 10 0100 165

Fax: +27 86 664 8130

Email: reception@mothapo.com

Website: www.mothapo.com

Branch Office

Free State

108 Standard and General Building, 72 Saint Andrews
Street, Bloemfontein

Tel: +27 71 871 5827

Satellite Offices

Eastern Cape

No. 3 Prestwich Avenue, Umthatha Central, 5100

Tel: +27 47 531 1538

Mpumalanga

Financial Square 5/1166, Corner of Mandela and
Woltemade Street, Die Heuwel Extension 8, Mpumalanga

Tel: +27 82 412 8116

Kwa-Zulu Natal

504A Lillian Ngoyi Road, Morningside, Durban, 4001

Tel: +27 31 941 3364 ext 009

Lesotho

P O Box 15407, Maseru, Lesotho, 100

Tel: +266 588 64 378